

## ANALYSIS OF HUMAN RESOURCES EXISTING IN AGRICULTURE OF VRANCEA DISTRICT

Mihaela-Loredana RUSU<sup>1</sup>

<sup>1</sup> U.S.A.M.V., Iași

e-mail: [loryrous@yahoo.com](mailto:loryrous@yahoo.com)

*The research carried out proposes the analysis of human resources in period 1995-2006 at the agricultural development from Vrancea District. Human resources represent one of the important factors in the agricultural development of a country. Human resources are essential to realization the studies because represent the most important factor for placing in value the potential of land and animals, also technical, financial and informational resources. The population can be described like a social subsystem which has in view specific indicators: number of the inhabitants, density, the structures of age, birth rate, mortality and the migration of population. Vrancea District has human resources with a density of 80,9 inhabitants/km<sup>2</sup> with 62,12% for rural area from Vrancea District. For this fact it is visible that there are enough human resources for the agricultural development in this area. The evolution of birth and death determined a negative natural increase (-915 persons), the rate was -3,7‰ in 2006 year. There was an increase with +3.65 per centes in 2006 comparative with 1995 at population with age 15-59 years, but a decrease with -4.89 per centes at population with age 0-14 years. It was observed that the population employed on activities of national economy was with -36.6 thousands persons in 2006 comparative with 1995. There was a tendency of growth in hospitality tourism with +1.3 thousands persons, in defense public administration +0.7 thousands persons, health and social assistance with 0.4 thousands persons and in other activities of national economy with 0.2 thousands persons in 2006 comparative with 1995. The scientific paper was realized by using the statistical data from official documents. There were used the specific indicators for the analysis of human resources: number of inhabitants, density, structure on age, birth rate, deceased birth and the migration of population. The comparison and statistical data analysis methods were used for this scientific project.*

**Key words:** human resources, population, development

Through human resource it understand a person or a group of persons who have capacities of physical and intellectual labour, which they can exercise in the process of work as part of some technical, economic and social systems. [2] Human resources are indispensable in realization of studies because there are the most important factor for putting in value the potential of ground and animals, of technical, financial and informational means.

Human resources are characteristic of: quantity, quality and structure [2].

*The quantity of human resources* is represented by the number of persons existent and necessary for a farming exploitation. *The quality of human resources* is given by the physical and intellectual capacities, as well as the degree of training and the experience essential for the development of different activities from rural economy with the contribution of the personal. *The structure of human resources* constitutes a complex process who refer to: qualification, age, years of service, etc.

## MATERIAL AND METHOD

The scientific paper was realized by used the statistical dates from official documents (Anuarul Statistic al Județului Vrancea 2006), as well as dates from National Institute of Statistics/The Statistical Vrancea County Department. There were used the specific indicators for the analyse of human resources: number of inhabitants, density, structure on age, birth rate, deceased birth and the migration of population. The comparison and statistical data analysis methods were used for this scientific project.

## RESULTS AND DISCUSSIONS

At the 1<sup>st</sup> July 2006 the population of Vrancea District was of 393023 inhabitants, representing 1,7 of the total population of Romania and the 29 place in national economy. (table 1)

There was a increase of number of inhabitants in period 1930-2006 (76 years) with some decreases in 2002 year and 2006 year. In period analysed number of inhabitants has grown with 26.82 percents.

Table 1

**The population and the density of population at censuses**

Years	Number of inhabitants	Inhabitants / km <sup>2</sup>
29 December 1930	262559	54,1
25 January 1948	290183	59,7
21 February 1956	326532	67,2
15 March 1966	351292	72,3
5 January 1977	369740	76,1
7 January 1992	393408	81,0
18 January 2002	387632	79,8
1 July 2005	393766	81,07
1 July 2006	393023	80,92

**Source:** <http://www.vrancea.insse.ro/>

The economic factor used for density is *number of inhabitants/km<sup>2</sup>* – represents the distribution of population on the administrative territory of an area at one time and permits the different models of distribution of population in territory,

identified the areas with concentrated population and the areas with sparse population.

According to *figure 1* we can see that the growth of density at 81.00 inhabitants/km<sup>2</sup> in 1992 comparative with 1930 when the density was of 54.1 inhabitants/km<sup>2</sup>. It was a decrease of density with 1.2 inhabitants/km<sup>2</sup> (79.8 inhabitants/km<sup>2</sup>) in 2002 comparative with 1992 (81 inhabitants/km<sup>2</sup>). In 2005 the density was grown (81.1 inhabitants/km<sup>2</sup>). In 2006 it can be noticed the tendency of decrease (80.9 inhabitants/km<sup>2</sup>).

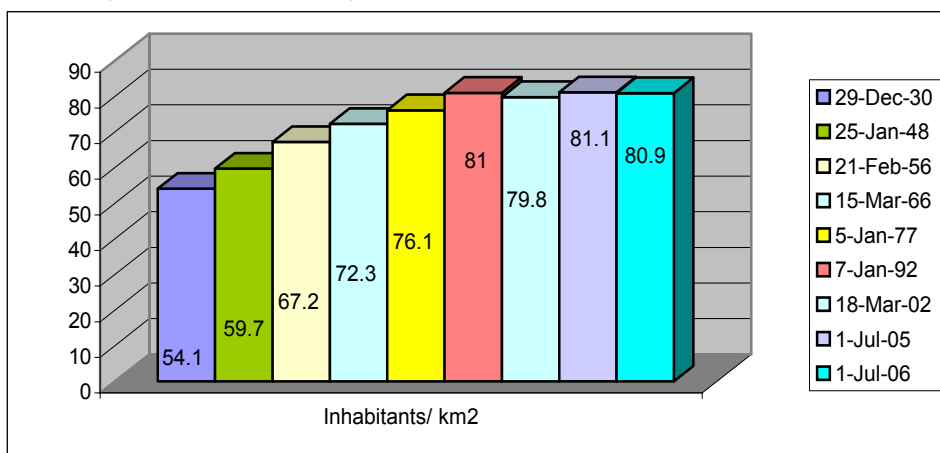


Figure 1 Evolution of the population in period of the years 1930-2006

In *table 2* there is the evolution and the structure of population in urban and rural area of Vrancea District. Analysing *table 2* it observed that in period 1995/2006 the population from urban area had the tendency of decrease from 152877 inhabitants (38.87%) in 1995 at 149223 locuitori (37.88%) in 2006. In rural area number of inhabitants had the tendency of growth from 240444 inhabitants (61.13%) in 1995 at 244738 inhabitants (62.12%) in 2006.

Table 2

**The evolution and the structure of the population of Vrancea District**

Year	Total (population)		Of which:			
	Number	%	Urban		Rural	
			Number	%	Number	%
1995	393321	100.00	152877	38.87	240444	61.13
2000	391178	100.00	149522	38.22	241656	61.78
2002	391833	100.00	148807	37.98	243026	62.02
2004	394551	100.00	149786	37.96	244765	62.04
2006	393961	100.00	149223	37.88	244738	62.12

Source: <http://www.vrancea.insse.ro/> – processing dates

We analyse the natural movement of population in rural area in 2006 comparative with 2005:

- in 2006 there were registered 2489 birth alive, with 136 more less than 2005, determining a birth rate of 10.2 born at 1000 inhabitants (Iasi county occupies the first place in the country with a birth rate of 12.5 born at 1000 inhabitants, where the average is of 10.2 born at 1000 inhabitants [1]);
- in 2006 number of deceased was of 3404 persons, with 138 persons more less than 2005, seeing a decrease of deceased rate from 14,4<sup>0</sup>/<sub>00</sub> in 2005 at 13,9<sup>0</sup>/<sub>00</sub> in 2006;
- it was a decrease of infant mortality (deceased under 1 year at 1000 born), from 13,39<sup>0</sup>/<sub>00</sub> in 2005 at 10,4 9<sup>0</sup>/<sub>00</sub> in 2006;
- the evolution of birth and dead determined a negative natural increase (-915 persons), which corresponds to a rate of -3,7<sup>0</sup>/<sub>00</sub> in anul 2006, the same in 2006.

Table 3

**Natural movement of the population in the rural of 2006 in comparison with 2005**

Year	Absolute data (year)					
	Born	Deceased	Natural increase	Marriages	Divorces	Deceased under 1 year
2005	2625	3542	-917	1282	326	35
2006	2489	3404	-915	1294	344	26
Year	Rate (at 1000 inhabitants)					
	Birth rate	Deceased rate	Natural increase	Marriage rate	Divorce rate	Infant mortality*
2005	10,7	14,4	-3,7	5,2	1,33	13,3
2006	10,2	13,9	-3,7	5,3	1,40	10,4

\* to 1000 born

Source : Anuarul statistic al județului Vrancea 2006.

In table 4 it is presented the evolution and the structure of population on age. Population with age 0-14 years had tendency of decrease from 21.10% in 1995 at 16.21% in 2006. Population with age 15-59 years had tendency of growth from 59.60% in 1995 at 63.25% in 2006. Population with age 60 years and over had tendency of growth from 19.30% in 1995 la 20.54% in 2006. We observe that was a growth with +3.65 percentes in 2006 comparative with 1995 at population with age 15-59 years.

Table 4

**Population on groups of age (number of persons)**

Year	Total		0-14 years		15-59 years		60 years and over	
	Nr.	%	Nr.	%	Nr.	%	Nr.	%
1995	393237	100	82974	21,10	234364	59,60	75899	19,30
2000	391220	100	75966	19,42	234075	59,83	81179	20,75
2002	396002	100	72097	18,21	242431	61,22	81474	20,57
2004	394286	100	66871	16,96	246084	62,41	81331	20,63
2006	393023	100	63715	16,21	248594	63,25	80714	20,54

Source: <http://www.vrancea.insse.ro/> – processing dates

For make a complet analyse about the existent human resources in Vrancea District was analysed the population employed, on activities of national economy. Analysing table 5 it can observed that the population employed on activities of national economy was with -36.6 thousands persons in 2006 comparative with 1995. Because in agriculture is the tendice of decrease with -16.4 thousands persons in 2006 comparative with 1995 it is possible that the persons work in another activities or migrated in foreign countries. There was a tendince of growth in tourism, hotels and restaurant with +1.3 thousands persons, in defense public administration +0.7 thousands persons, health an social assistance with 0.4 thousands persons and in other activities of national economy with 0.2 thousands persons in 2006 comparative with 1995.

Table 5

**The population employed, on activities of national economy (at the end of the year, thousands of persons)**

Vrancea District	1995	2000	2002	2004	2006	2006/1995 %
Total economy	179,1	156,8	146,7	141,7	142,5	79,56
Agriculture, hunting and forestry	81,1	91,7	77,2	67,8	64,7	79,78
Fishing and pisciculture	-	-	-	-	-	-
Industry/total, of which:	45,3	27,4	29,9	28,5	29,1	64,24
Extractive industry	0,2	0,2	0,1	0,1	0,1	50,00
Processing industry	43,3	25,3	28,0	26,8	27,4	63,27
Electric and thermal energy, gasses and water	1,8	1,9	1,8	1,6	1,6	88,89
Construction	7,2	3,1	3,3	4,3	4,3	59,72
Commerce	14,1	9,3	10,3	11,7	13,9	98,58
Hotels and restaurants	1,0	0,7	0,9	2,5	2,3	230,00
Transport, storage and communication	7,7	4,8	4,8	4,1	5,5	71,43
Financial brokerage	1,1	1,3	0,8	0,8	0,9	81,82
Real estate transactions and other services	3,6	2,7	2,7	3,2	3,5	97,22
Defense and public administration	2,3	2,2	2,2	2,7	3,0	130,43
Education	7,0	5,7	5,8	6,0	6,0	85,71
Health an social assistance	5,8	6,0	6,5	6,4	6,2	106,90
Other activities of national economy	2,9	1,9	2,3	3,7	3,1	106,90

Source: *Anuarul statistic al județului Vrancea 2006*] – processing dates

## CONCLUSIONS

1. The human resources are very important for the economy of country because them provide productive and economic performance in agriculture.

2. Vrancea District has human resource, having a density of 80.9 inhabitants/km<sup>2</sup>, of which 62.12% are from rural area of Vrancea District, so we can say that are enough human resources for the rural development in analyse area.

3. The evolution of birth and dead determined a negative natural increase (-915 persons), which corresponds to a rate of -3,7<sup>0</sup>/<sub>00</sub> in anul 2006.

4. There was a increase with +3.65 percentes in 2006 comparative with 1995 at population with age 15-59 years, but a deacrese with -4.89 percentes at population with age 0-14 years.

## BIBLIOGRAPHY

1. Alexa-Airinei, Ramona, Dăscălescu, M., 2008 - *Population an labour force in the Iasi county agriculture*, Lucrări șt., seria Zootehnie, U.Ș.A.M.V. Iași.
2. Caia, A. și colab., 1998 - *Economie agrară*, Editura "Ion Ionescu de la Brad", Iași.
3. Ciurea, I.V. și colab., 2005 – *Management*, Editura "Ion Ionescu de la Brad", Iași.
4. Ciurea, I.V., Mihalache, Roxana, Săvuță, Veronica, 2005 - *Studiu diagnostic privind resursele umane din agricultura județului Iași în perspectiva integrării în Uniunea Europeană*, Lucrări șt., seria Horticultură, U.Ș.A.M.V. Iași.
5. \*\*\* *Anuarul Statistic al județului Vrancea 2006*.
6. \*\*\* <http://www.cjvrancea.ro/>
7. \*\*\* <http://www.vrancea.insse.ro/>